



# GHEZZI – BRIAN.com



210002006.

## FURIA FRONT FAIRING KIT

[not painted]



210002002.

## FURIA FRONT LIGHT KIT



# GHEZZI – BRIAN.com



200099008.

## CENTRAL EXHAUST SYSTEM FOR MOTO GUZZI V11

To be mounted under the gear, equipped with conical collectors

**Suitable for Moto Guzzi V11 (all models)**

**POWER:** increase of 3.9 CV compared to the original (equally distributed on the whole using scale)

**TORQUE:** increase of 0,32 KGM compared to the original

**WEIGHT:** whole plant 7,2 KG reduction of 9,1 KG compared to the original.

**DYNAMIC CHARACTERISTICS:** The weight reduction combined to the mass approaching to the barycentre improves the bend insertion and the agility in the "flip-flop" considerably.



242002179.

## BELLY PAN FOR V11, 1100 Sport, Daytona, Centauro

Carbon fibre



# GHEZZI – BRIAN.com



2111003.  
**MULTI-ADJUSTABLE UPSIDE-DOWN  
PAIOLI FORK**

Length: mm 726

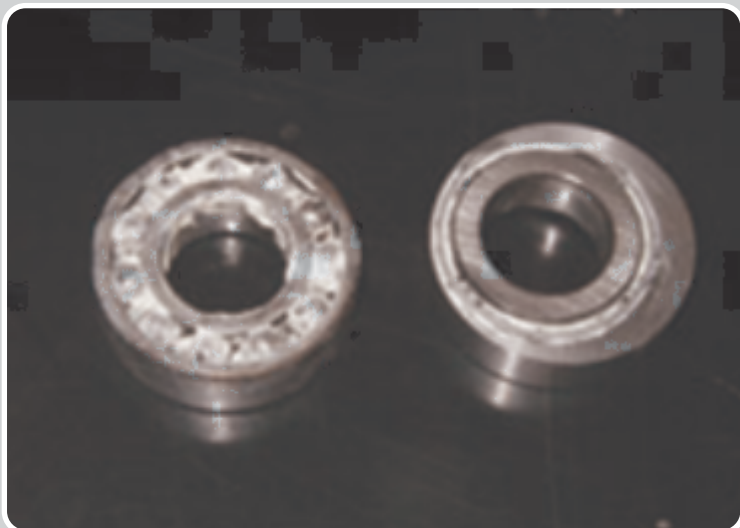
Diameter: mm 41

Assembly includes: fork plates, steering stem, axle (without spacers)

Suitable for all MotoGuzzi big twin models.



# GHEZZI – BRIAN.com



200099003.

## **RACING ECCENTRIC ADJUSTABLE STEERING BEARINGS**

Rake reduction: 1 degree

Available for all Guzzi models manufactured after 1980  
(except 350-750cc models)

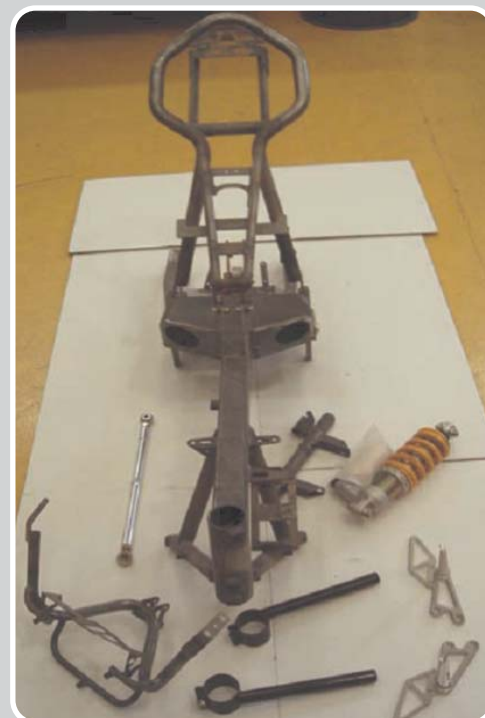


210090003.

## **SLIDERS KIT FOR 4V MOTORS (Daytona, Centauro)**



# GHEZZI – BRIAN.com



2111001.

## FRAME KIT - Type 1

[not painted]

- Central frame
- Underframe
- Swivel arm
- Suspension rod
- Bearings

2111002.

## FRAME KIT - Type 2

[not painted]

- Central frame
- Underframe with brake and gear pedals
- Swivel arm
- Suspension rod
- Bearings
- Underseat frame
- Instrument board frame
- Push rod
- Öhlins Monoshock absorber
- Footrests
- Handle bars

Colours available: **Black, blue**

The frame is meant to be fitted with the 5-gear box